





Outfall 009 ELV-1C Waste Characterization Sample Location

Base Map Legend

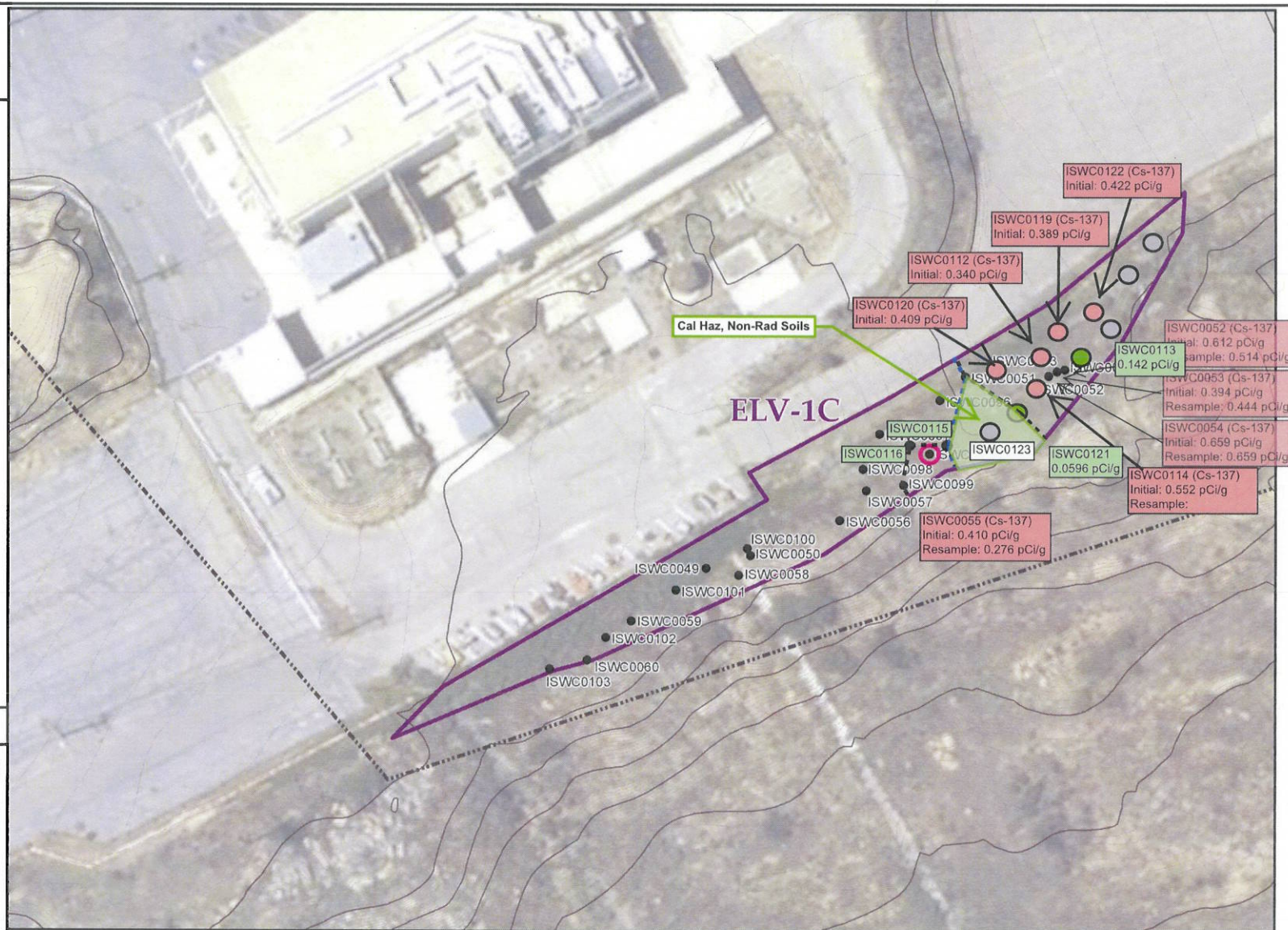
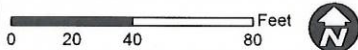
-  Administrative Area Boundary
-  RFI Site Boundary
-  Excavation Area
-  Surface Water Drainage
-  Surface Water Divide
-  Outfall Water Divide
-  NFDIS Outfall
-  Elevation Contour
-  Waste Characterization Sample Location

November 2012 Trigger Levels
Cs-137 = 0.225 pCi/g

**CESIUM DATA IS CURRENT
TO JANUARY 2013**

-  Resampling necessary to confirm the initial radionuclide result that met or exceeded the trigger level.
-  Resampling confirmed the initial radionuclide result that met or exceeded the trigger level.
-  Proposed Step-out Sample Location; analysis necessary to delineate confirmed trigger level exceedance.
-  Proposed Step-out Sample Location; analysis pending confirmation of initial trigger level exceedance.

DRAFT





S A N T A S U S A N A F I E L D L A B O R A T O R Y

 **MWH** FIGURE 1

Outfall 009 ELV-1D Waste Characterization Sample Location

Base Map Legend


-  Administrative Area Boundary
-  RFI Site Boundary
-  Excavation Area
-  Surface Water Drainage
-  Surface Water Divide
-  Outfall Water Divide
-  NPDES Outfall
-  Elevation Contour
-  Waste Characterization Sample Location


December 2011 Trigger Levels


Cs-137 = 0.207 pCi/g

U-235 = 0.151 pCi/g

U-238 = 1.80 pCi/g

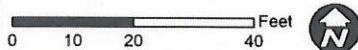
 Resampling necessary because initial result is non-detect, however, the detection limit is above the trigger level.

 Resampling necessary to confirm the initial radionuclide result that met or exceeded the trigger level.

 Resampling confirmed the initial radionuclide result that met or exceeded the trigger level.

CESIUM DATA CURRENT TO
JANUARY 2013

DRAFT



S A N T A S U S A N A F I E L D L A B O R A T O R Y

 MWH FIGURE 2

Outfall 009 Waste Characterization Sample Locations for LOX-1B-3

Base Map Legend

- Administrative Area Boundary
- RFI Site Boundary
- Report Group Boundary
- NPDES Outfall
- A/C Paving
- Drainage
- Non Jurisdictional Surface Water Pathway
- Surface Water Divide

Base Map Legend

- ISRA Excavation Boundary

December 2011 Trigger Levels

Cs-137 = 0.207 pCi/g
U-235 = 0.151 pCi/g
U-238 = 1.80 pCi/g

- Resampling necessary because initial result is non-detect, however, the detection limit is above the trigger level.
- Resampling necessary to confirm the initial radionuclide result that met or exceeded the trigger level.
- Resampling confirmed the initial radionuclide result that met or exceeded the trigger level.

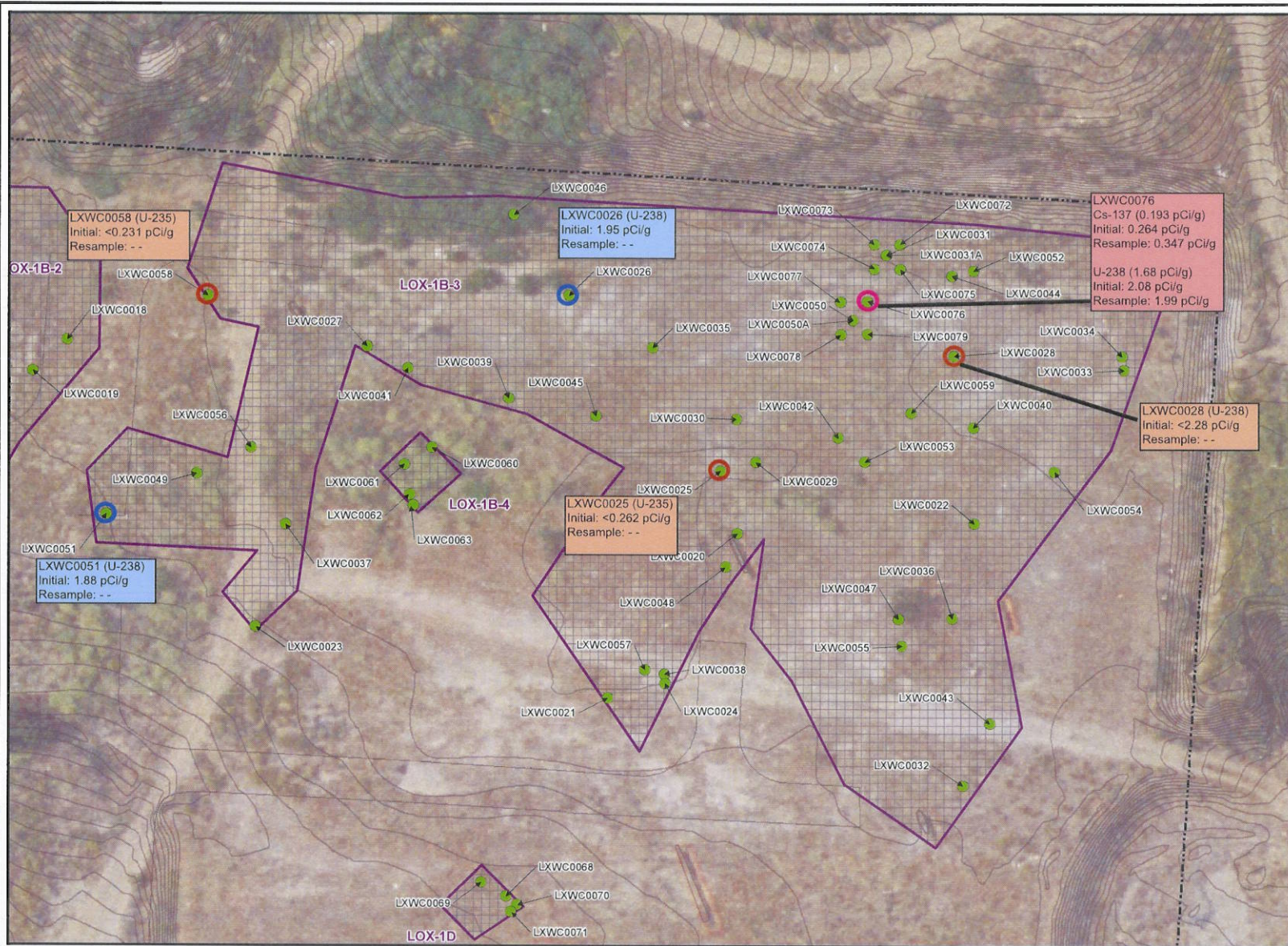
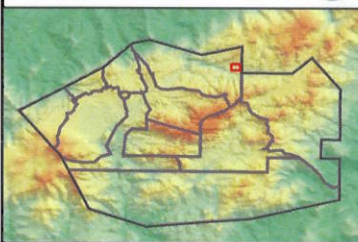
**CESIUM DATA IS CURRENT TO
JANUARY 2013**

Note:

1. Sample locations and depths were randomly selected. The 3ft x 3ft grid used in the sample location selection process is shown.
2. Aerial imagery from Google Earth, 2010.
3. Topographic contours from Lidar data, 2008.

Document: 23RA_F04a_Working_LOX-1B-3_SampleLocations_WC.mxd Date: Feb 16, 2012

1 inch = 35 feet
0 35 70 Feet



SANTA SUSANA FIELD LABORATORY

FIGURE 1