

Brentwood Dog Park Hazard Assessment

Public Meeting
November 27, 2006

Meeting Agenda

- Opening Comments
- Presentation of the Brentwood Dog Park Hazard Assessment
- Public Comments –Questions & Answers

Opening Comments

- Los Angeles City Councilmember Bill Rosendahl's Office

Presentation of the Brentwood Dog Park Hazard Assessment

- Michael Noel CIH of **Millennium Consulting Associates**
- Certified Industrial Hygienist
- Toxicologist
- **Project Leader**
- Other Members include
 - Certified Health Physicists (CHP)-Chris Miles
 - & Joseph Guido
 - Health Risk Assessor-Dr. James Embree
 - Registered Geologists
 - Registered Hydrologists
 - Professional Engineers

Historical Perspective

- Some Degree of Low Level Medical Radioisotopes and Medical Waste were buried in the Canyon between VA Los Angeles and the Brentwood Dog Park area during the 1950's – 1960's. Clear records do not exist prior to approximately 1960.
- There are questions regarding possible burial prior to 1950.
- There are questions as to whether other entities buried medical debris or incinerator ash at the site.

Historical Perspective

- The site has been inspected and assessed on numerous occasions over the last 25 years.
- Determinations have been made that the site presents “no public harm” by several State and Federal agencies.
- Nevertheless, the community still has many questions regarding the long-term safety of the site.

Remaining Questions

- What radioactive materials were buried at the site and in what quantities and at what locations?
- What chemicals were buried at the site and in what quantities and at what locations?

Remaining Questions

- What effect did these burial activities have on the surface and ground water?
- What is the potential for pathogenic organisms to be present?

Remaining Questions

- What effect do these factors have on the current and future health of the community residents and the environment?

2006 Environmental Site Assessment

- **Objective:** To conduct a comprehensive site assessment, answer remaining questions and gain closure on the uncertainty regarding potential health issues.

Scope of Dog Park Assessment

■ Phase I

- Comprehensive Radiation Walk-over Survey in:
 - Westwood Park (Control Area)
 - **Brentwood School Site**
 - **Brentwood Dog Park and adjacent playing fields**
 - **Canyons next to VA Los Angeles and below Dog Park to confluence.**
 - **VA Los Angeles (portions of the Golf Course next to Brentwood School)**

Vicinity Map

Brentwood Dog Park

Burial Sites

Brentwood School

VA Hospital

VA Property

Westwood Park
(Control Site)



Westwood Park – Control Area



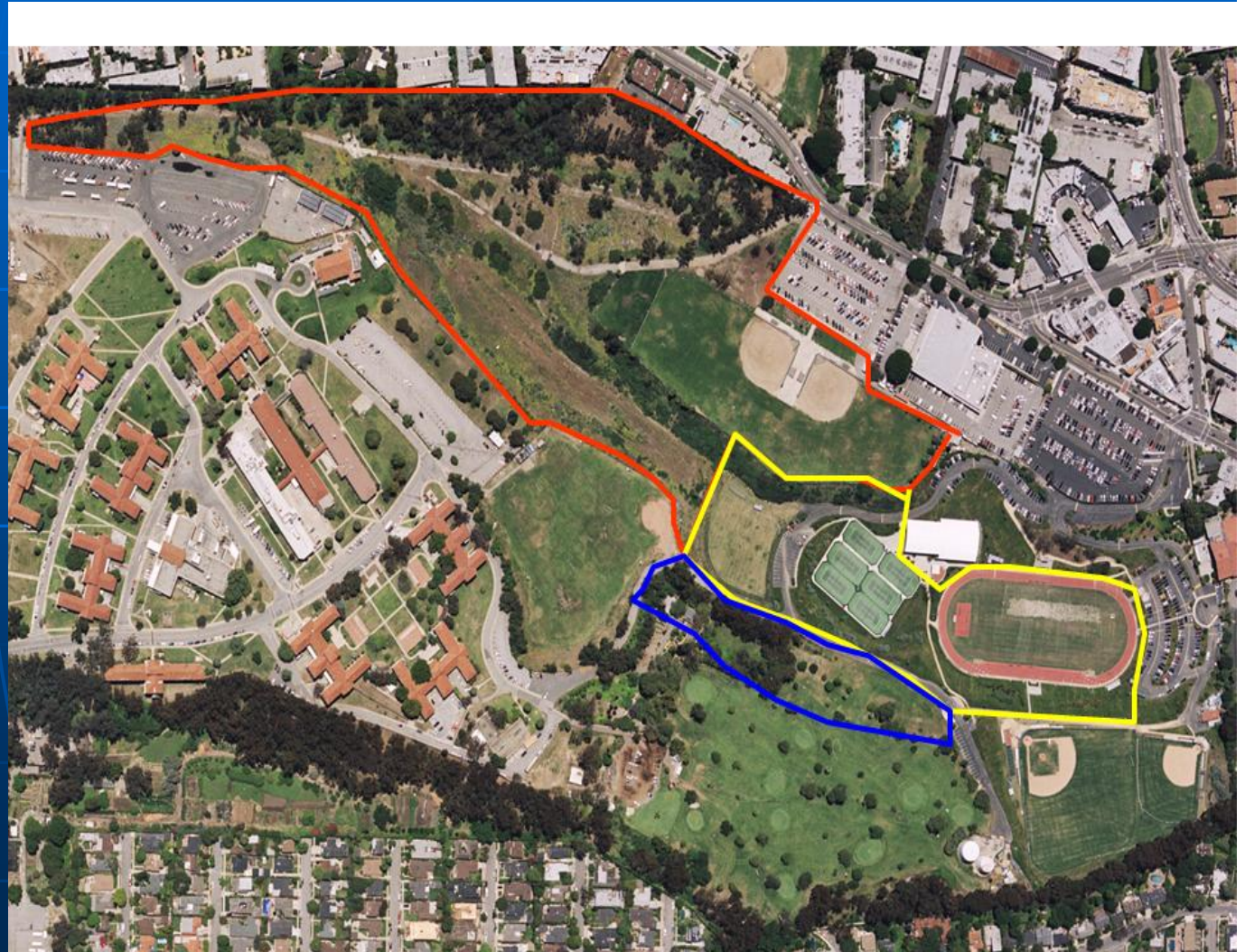
VA & Adjacent Properties within the Scope of the Assessment-Phase I

Brentwood School Site

Brentwood Dog Park and adjacent playing fields

Canyons next to VA Los Angeles and below Dog Park to confluence.

VA Los Angeles (portions of the Golf Course next to Brentwood School)



Walk-over Survey Process

- Grid off entire site with 10 Meter Grid System
- Record every Grid corner with GPS
- Perform Walk-over Survey of entire Grid with GM Pancake and Sodium Iodide (NAI) Radiation Detectors for:
 - **Alpha Particles** – Low Activity Level (stopped with paper)
 - **Beta Particles** – Low Activity Level (stopped with normal clothing)
 - **Gamma Particles** – High Activity Level (stopped with denser materials such as concrete or lead)

Walk-over Survey Process- continued

- Mark location and record with GPS any unusual readings above background.
- Marked areas will be physically sampled and analyzed for specific types of radiation. Samples sent to an independent certified laboratory able to identify radioactive isotopes.
- Additional follow-up may be necessary including soil borings.

Walk-over Survey Process- continued

- All Survey data and Sampling data will then be compiled to yield a risk assessment for Radioactive surface contamination.
- Data will be presented in a second Public Meeting.
- Phase II planning and implementation will proceed.

Hazard Assessment-Phase II

■ Phase II

- Subsurface investigation and sampling will commence in and around the known disposal areas in the canyon between the VA and the Brentwood Dog Park.
- Any additional suspect areas will be investigated and subsurface sampling may be performed.

VA & Adjacent Properties within the Scope of the Assessment-Phase II

Brentwood Dog Park and adjacent playing fields

Canyons next to VA Los Angeles and below Dog Park to confluence.

Other Areas as Indicated by Results of Inspection and/or testing.



Phase II Objectives

- Conduct a Comprehensive evaluation of the Hydrology (surface and subsurface water movement) to and through the site.
- Install Monitoring wells as necessary to properly evaluate water quality.
- Conduct Water Testing initially and repeat at a **To Be Determined** schedule.

Phase II Objectives-continued

- Perform subsurface drilling and evaluation of soil cores for radiation and chemical contamination.
- Drilling, sampling and evaluation will occur throughout the Phase II area indicated in prior slide.
- Multiple samples will be obtained to provide statistical reliability in the collected data.

Phase II

- Data will be compiled and a risk assessment performed by Dr. James Embree.
- Results will be discussed with the community at a Public meeting.

Question and Answer Session

