



Department of  
Toxic Substances  
Control

*The Mission of  
the Department of  
Toxic Substances  
Control is to  
provide the highest  
level of safety, and  
to protect public  
health and the  
environment from  
toxic harm.*



State of California



California  
Environmental  
Protection Agency

## FACT SHEET October 2007

# DTSC Issues Order to Boeing and NASA to Take Action on Sage Ranch

On October xx, 2007, The Department of Toxic Substances Control (DTSC) issued an Imminent and Substantial Endangerment Order (Order) to The Boeing Company (Boeing) and the National Aeronautics and Space Administration (NASA) for the cleanup of Asbestos Containing Material (asbestos) and polyaromatic hydrocarbons (PAHs) along the northern boundary (please see the map on page two) of the Santa Susana Field Laboratory (SSFL). The SSFL is located in the Simi Hills in the southeastern portion of Ventura County, California, approximately 30 miles northwest of downtown Los Angeles.

DTSC issued this order under its authority in the California Health and Safety Code. Since the contamination is on adjacent property and potentially accessible to the public, DTSC is requiring quick action and is sending this fact sheet to inform the community of the cleanup activities. During the development of the Order, we briefed community representatives regarding the sampling results and the need for cleanup.

### **This Fact Sheet Provides a Brief Summary of:**

- Specific Location of Cleanup
- Why Cleanup is Necessary
- Background for this Action
- Proposed Cleanup
- Safety and Dust Control
- Proposed Transportation Route for Trucks
- California Environmental Quality Act
- Pre-Cleanup Activities
- Where to Find the Documents
- Who to Contact for Information

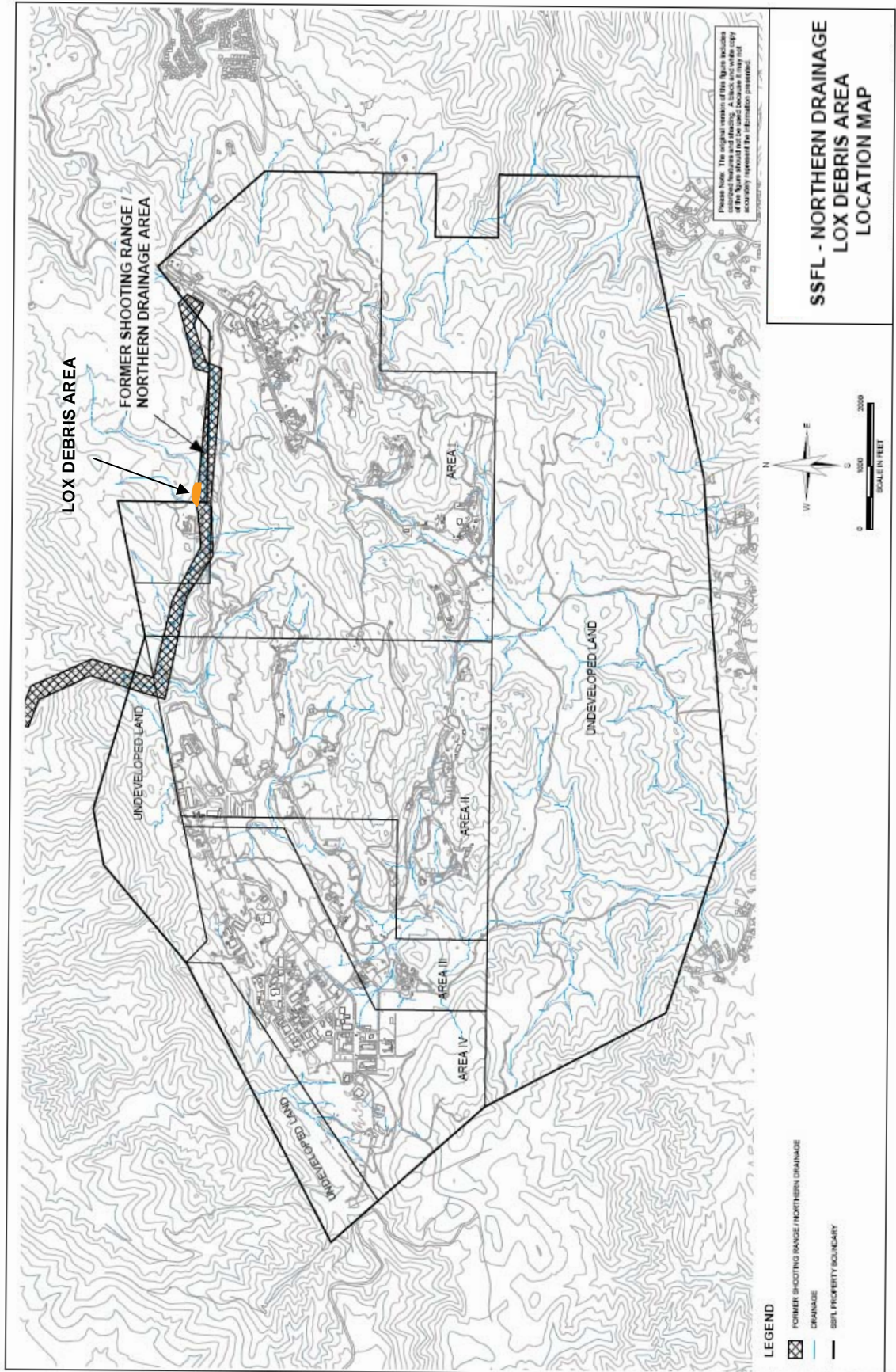
### **Specific Location of Cleanup**

This Order applies to property including the “Northern Drainage” and the former Rocketdyne- Atomics International Rifle and Pistol Club. The headwaters of the Northern Drainage is in the southeastern portion of the Mountains Recreation Conservancy Authority’s Sage Ranch Park (Sage Ranch) and continues west onto the SSFL facility and then in a northerly direction off-site onto the Brandeis-Bardin Institute property.

### **Why Cleanup is Necessary**

Health and Safety Code 25358.3 (a) authorizes DTSC to issue an order when DTSC determines that there may be danger to the public health or welfare or to the environment because of a release or threatened release of a hazardous substance.

The presence of asbestos is a potential risk to human health, as it can cause lung disease. The elevated concentrations of PAHs pose a potential risk to human health and the environment. Long-term exposure to low levels of some PAHs, such as benzo(a)pyrene, has the potential to cause cancer.





## Background for this Action

On June 15, 2007, DTSC staff met with community members, at their request, to observe debris (waste) in and near a drainage located in the southwest corner of the Sage Ranch. On June 22, 2007, DTSC staff met with Boeing and Sage Ranch staff to look at and discuss debris in the Northern Drainage. As a result of these site visits, DTSC directed Boeing to restrict public access to the Northern Drainage through placement of fencing and signage. DTSC also directed Boeing to conduct a survey of the Northern Drainage as well as throughout the Sage Ranch area formerly leased by SSFL. Both tasks have been completed. In addition to the survey, Boeing, under DTSC oversight, conducted additional sampling to study the nature and extent of the debris. The results of the investigation showed the presence of asbestos-containing materials in the former liquid oxygen plant (LOX) debris field and elevated concentrations of PAHs in soil near and downstream of the former gun club. On October 4, DTSC staff met with the same community members at Sage Ranch to discuss the plans for removal.

The debris field containing asbestos is located southeast of a former LOX facility that once existed at SSFL. This debris field is made up of foam insulation materials, deposits of white powdery material, and construction debris, and was deposited in the Northern Drainage sometime between 1965 and 1978. Results from a 2007 study recently identified asbestos, silica and antimony within the LOX debris field. The volume of LOX debris is approximately 500 cubic yards.

An additional debris field is related to the former Rocketdyne-Atomics International Rifle and Pistol Club shooting range. The former shooting range is approximately 3.5 acres in size and is located on the Sage Ranch property, near the Main Gate of SSFL. The shooting range operated from approximately 1972 to 1991 on leased land located north of SSFL. Recent sampling showed elevated levels of PAHs, which likely came from clay pigeon targets. The 2005 Topanga fire burned some of this debris, causing it to be more brittle and potentially more easily

movable within the Northern Drainage. The volume of clay pigeon and debris containing PAHs is approximately 4,000 cubic yards within the former shooting range and another 4,000 cubic yards along the Northern Drainage.

## Proposed Cleanup

Boeing submitted two workplans, one for each debris field, to DTSC. Preliminary drafts were reviewed by DTSC and conditions added. The asbestos debris will be removed using a long reach excavator; and following the removal, the debris will be removed using hand tools. No waste will be stored or staged in the streambed at any time or in the work zone overnight. Final removal will continue with HEPA vacuums and hand tools until all debris is removed and an inspection of the work is performed.

The clay target debris will be flagged in the field and removed with a backhoe or front-end loader. The debris will be scraped away in layers, rather than in mass. After the initial removal, any remaining debris will be removed using hand tools. The debris will be secured with plastic sheeting and sandbags at the end of each day. Confirmation samples will be collected to confirm the completion of the project.

## Safety & Dust Control During Cleanup

The following actions will be implemented during this process to ensure public safety and minimize dust:

- Temporary fencing with windscreens will be installed for security and dust control
- All vehicles will maintain slow speeds while on the property
- Spraying of work areas with clean water to prevent dust
- Securing trucks with covers before they leave the site
- Truck tires entering and existing the site will be brushed to remove soils and debris
- Monitoring the air at the site to ensure the amount of dust stays at safe levels
- DTSC will provide oversight of the cleanup activities

## Proposed Transportation Route for Trucks

The cleanup will begin on October xx, 2007 and will take approximately five weeks. The total volume of debris and soil likely to be generated is about 8,500 cubic yards and will be approximately 764 truck loads. The trucks will travel to and from the site at set intervals to avoid creating traffic congestion along Woolsey Canyon Road. Between 7 a.m. to 9 a.m. and 4 p.m. to 7 p.m., trucks traveling on City of Los Angeles streets will be spread out at a minimum of 15 minute intervals. No more than 20 trucks will arrive and leave the Site on the same day. From the SSFL gate, vehicles will turn right (east) onto Woolsey Canyon Road, turn right (south) onto Valley Circle Boulevard, turn left (west) onto Roscoe Boulevard, and turn left (north) onto Topanga Canyon Boulevard (Figure 4). The entrance to the 118 Fwy is on Topanga Canyon Boulevard.

## California Environmental Quality Act

In compliance with the California Environmental Quality Act (CEQA), DTSC has prepared a draft Notice of Exemption (NOE) for this project. The NOE states that the proposed cleanup is exempt from CEQA and will not have a significant negative effect on human health and the environment because of short duration, relatively small amount of contaminated soil to be removed, and the controlled way in which the contaminated soils will be dug out, loaded onto trucks and taken away to an approved, permitted facility for disposal.

## Pre-Cleanup Activities

In order to begin clean-up work as soon as possible, Boeing and NASA conducted pre-clean up work that included the following:

- 1) Installed storm-water barriers around the asbestos and clay target clean-up areas.
- 2) Completed road grading and preparation near the LOX area and on Sage Ranch property including posting caution tape and barriers to establish work boundaries.
- 3) Conducted brush clearance in and around the asbestos debris and clay target clean-up areas.

## Where to Find the Documents

The Draft Workplans and other related documents for the SSFL site are available for review at the following information repositories:

### Simi Valley Library

2969 Tapo Canyon Road  
Simi Valley, CA 93063  
(805) 526-1735  
Contact: Reference Librarian

### Platt Library

23600 Victory Blvd.  
Woodland Hills, CA 91367  
(818) 340-9386  
Contact: Susan Bougetz

### Oviatt Library

California State University, Northridge  
1811 Nordhoff Street  
2nd Floor, Room 265  
Northridge, CA 91330  
(818) 677-2285  
Contact: Maryanne Affi

### Department of Toxic Substances Control

Regional Records Office  
1011 North Grandview Avenue  
Glendale, CA 91201  
Contact: Jone Barrio, (818) 551-2886

Hours: 8 a.m. – 5 p.m. Monday – Friday

The complete workplans can be found on the SSFL website, at <http://www.dtsc-ssfl.com/>.

## Who to Contact for Information

If you have any questions about the project or cleanup activities, please contact:

Laura Rainey  
DTSC Senior Engineering Geologist  
(714) 484-5434  
Or email at [lrainey@dtsc.ca.gov](mailto:lrainey@dtsc.ca.gov)

Susan Callery  
DTSC Public Participation Specialist  
(818) 551-2875 or toll free 1-866-495-5651 (press 3, then 4)  
Or email at [scallery@dtsc.ca.gov](mailto:scallery@dtsc.ca.gov)

Media Inquiries:

Jeanne Garcia  
DTSC Public Information Officer  
(818) 551-2176  
jgarcia1@dtsc.ca.gov

**Notice to Hearing-Impaired Individuals:**

You can obtain additional information about the site by using the California State Relay Service at (888) 877 5378 (TDD). Ask them to contact Susan Callery at (818) 551-2875 regarding the Santa Susana Field Laboratory project.

For more information about DTSC, see our Web site at [www.dtsc.ca.gov](http://www.dtsc.ca.gov)